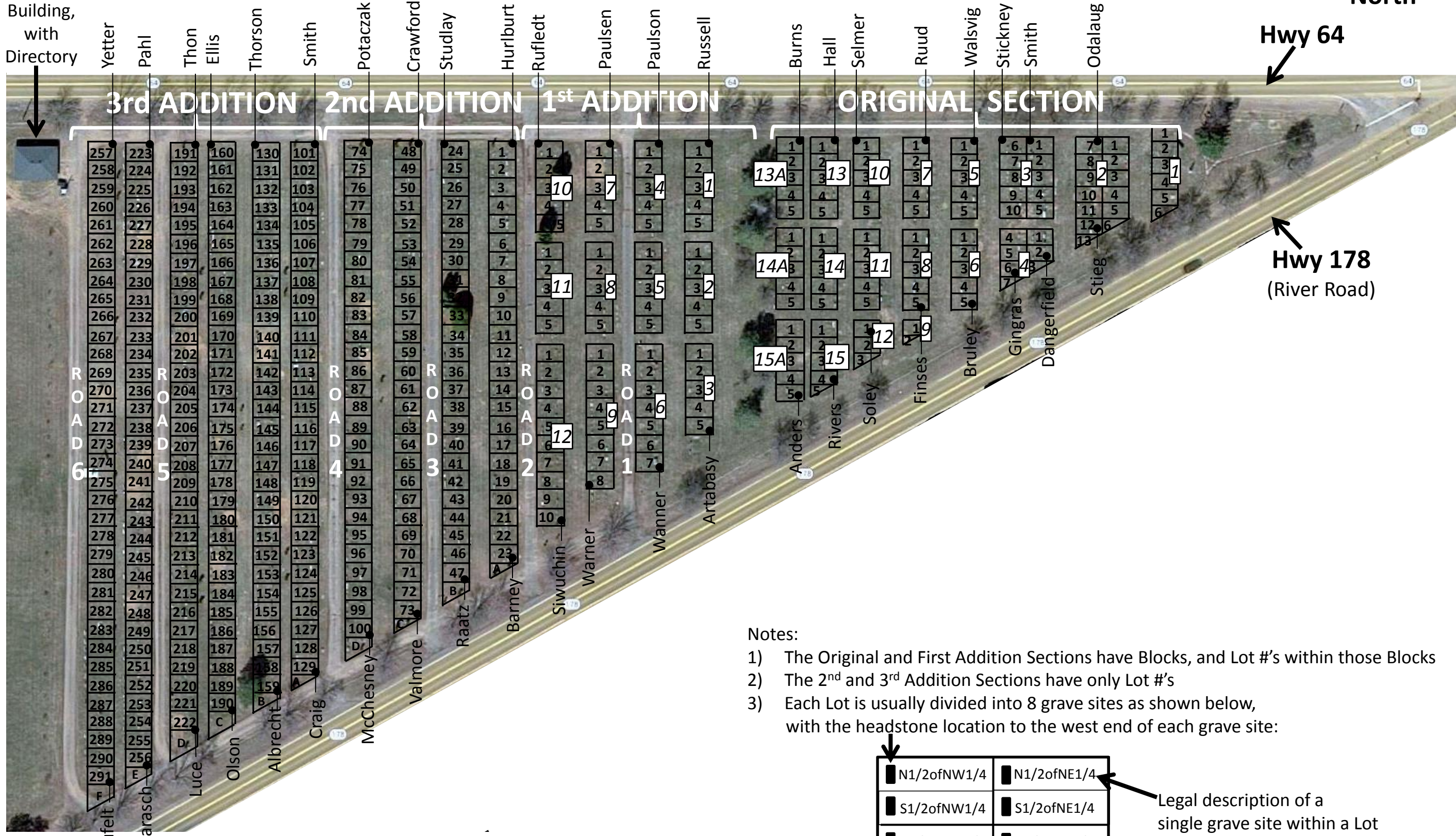


CORNELL CEMETERY

Cornell, Wisconsin 54732



Maint. Building, with Directory

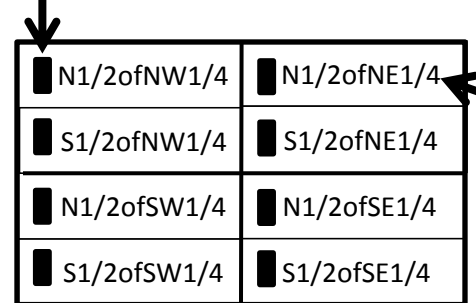


Hwy 64

Hwy 178
(River Road)

Notes:

- 1) The Original and First Addition Sections have Blocks, and Lot #'s within those Blocks
- 2) The 2nd and 3rd Addition Sections have only Lot #'s
- 3) Each Lot is usually divided into 8 grave sites as shown below, with the headstone location to the west end of each grave site:



Legal description of a single grave site within a Lot (as shown on a deed)

Sample Lot with 8 grave sites

Names shown are on prominent stones near end of columns, to help people get their bearings when they are at the cemetery searching for gravesites.